

DO280 - Red Hat OpenShift Administration I

Duration: 3 days

DATASHEET

COURSE CONTENT SUMMARY

- Install an OpenShift Platform Container cluster
- Configure and manage masters and nodes
- Secure OpenShift Platform Container
- Control access to resources on OpenShift Platform Container
- Monitor and collect metrics on OpenShift Platform Container
- Deploy applications on OpenShift Platform Container using Source-to-Image (S2I)
- Manage storage on OpenShift Platform Container

COURSE OVERVIEW

Learn to install, configure, and manage containers.

Red Hat OpenShift Administration I (DO280) enables system administrators, architects, and developers to acquire the skills they need to administer Red Hat® OpenShift Container Platform. Through numerous hands-on exercises, the student will create, configure, manage, and troubleshoot OpenShift clusters. Students will also deploy sample applications to further understand development use cases. This creates an environment that supports DevOps principles such as reduced time to market and continuous delivery.

This course is based on Red Hat OpenShift Container Platform 3.5.

WAYS TO TRAIN/TEST

Red Hat offers a method of training that is convenient to you - classroom, online, or at your site.

OUTLINE FOR THIS COURSE

Introduction to Red Hat OpenShift Container Platform

Review features and architecture of OpenShift Container Platform.

Install OpenShift Container Platform

Install OpenShift Container Platform and configure a master and node.

Explore networking concepts

Describe and explore OpenShift networking concepts.

Execute commands

Execute commands using the command-line interface.

OpenShift Container Platform resources

Control access to OpenShift Container Platform resources.

Persistent storage

Provision persistent storage and use it for the internal registry.

Manage application deployments

Manipulate resources to manage deployed applications.

Metrics subsystem

Install and configure the metrics- gathering system.

Manage and monitor

Manage and monitor OpenShift Container Platform resources and software.

Comprehensive review

Install, configure, and deploy an application on a cluster.



facebook.com/redhatinc
@redhatnews
linkedin.com/company/red-hat

redhat.com

AUDIENCE

This course is designed for system administrators, architects, and developers who want to install and configure Red Hat OpenShift Container Platform.

PREREQUISITES FOR THIS COURSE

Red Hat recommends these prerequisites:

Be certified as a Red Hat Certified System Administrator, or equivalent Red Hat Enterprise Linux system administration experience. Complete the Introduction to Containers, Kubernetes, and Red Hat OpenShift (DO180) course or have equivalent experience with containers, Kubernetes, and OpenShift basics.

IMPACT OF THIS TRAINING

Impact on the organization

This course is intended to develop the skills needed to build and deploy containerized applications that are highly available, resilient, and scalable, using Red Hat OpenShift Container Platform. Red Hat OpenShift Container Platform allows rapid application development and deployment, as well as portability of an application across environments. It also offers simplified application scaling, administration, and maintenance.

Red Hat has created this course in a way intended to benefit our customers, but each company and infrastructure is unique, and actual results or benefits may vary.

Impact on the individual

As a result of attending this course, students should be able to configure, secure, and manage a Red Hat OpenShift Container Platform cluster and deploy applications on it.

Students should be able to demonstrate the following skills:

Install OpenShift Container Platform clusters.

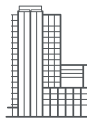
Configure and manage OpenShift masters and nodes.

Secure OpenShift.

Control access to resources on OpenShift.

Deploy applications on OpenShift using Source-to-Image (S2I).

Configure and manage OpenShift pods, services, routes, secrets, and other resources.



ABOUT RED HAT

Red Hat is the world's leading provider of open source software solutions, using a community-powered approach to reliable and high-performing cloud, Linux, middleware, storage, and virtualization technologies. Red Hat also offers award-winning support, training, and consulting services. As a connective hub in a global network of enterprises, partners, and open source communities, Red Hat helps create relevant, innovative technologies that liberate resources for growth and prepare customers for the future of IT.



facebook.com/redhatinc
@redhatnews
linkedin.com/company/red-hat

NORTH AMERICA
1 888 REDHAT1

**EUROPE, MIDDLE EAST,
AND AFRICA**
00800 7334 2835
europe@redhat.com

ASIA PACIFIC
+65 6490 4200
apac@redhat.com

LATIN AMERICA
+54 11 4329 7300
info-latam@redhat.com